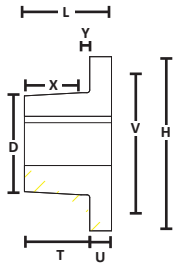
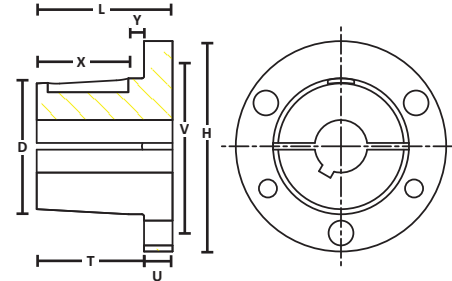


SPLIT TAPER BUSHINGS

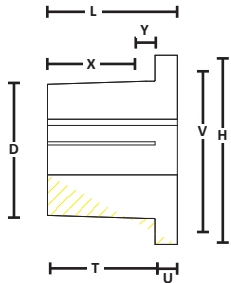
Steel/Iron



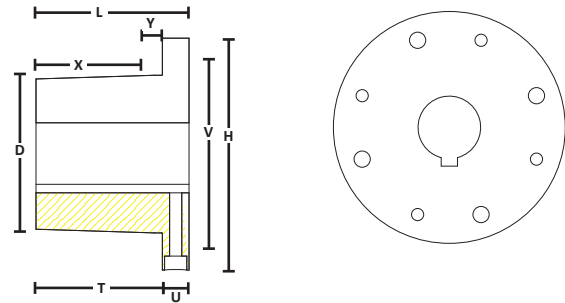
“G” and “H” Bushing



“B”, “P”, “Q” and “R” Bushing



“S” and “U” Bushing



“W” and “Y” Bushing

Bushing	Dimensions										Bore Range	Cap Screws		Wrench Torque In.-Lbs.
	L	U	T	D		H	V	W	X	Y		No.	Size	
				Large End	Small End									
G	1.000"	0.250"	0.750"	1.172"	1.133"	2.000"	1.563"	—	0.625"	0.188"	0.375" - 0.938"	2	1/4" X 5/8"	95
H	1.250"	0.250"	1.000"	1.625"	1.570"	2.500"	2.000"	—	0.875"	0.188"	0.375" - 1.375"	2	1/4 X 3/4"	95
P1	1.938"	0.406"	1.531"	1.938"	1.856"	3.000"	2.438"	0.375"	1.313"	0.219"	0.500" - 0.438"	3	5/16 X 1"	192
P2	2.938"	0.406"	2.531"	1.938"	1.793"	3.000"	2.438"	0.375"	2.313"	0.219"	0.750" - 1.438"	3	5/16 X 1"	192
P3	4.438"	0.406"	4.031"	1.938"	1.699"	3.000"	2.438"	0.375"	3.813"	0.219"	1.125" - 1.375"	3	5/16 X 1"	192
B	1.938"	0.500"	1.438"	2.625"	2.557"	3.688"	3.125"	0.500"	1.188"	0.219"	0.500" - 1.938"	3	5/16 X 1 1/4"	192
Q1	2.500"	0.531"	1.969"	2.875"	2.766"	4.125"	3.375"	0.500"	1.750"	0.219"	0.750" - 2.063"	3	3/8 X 1 1/4"	348
Q2	3.500"	0.531"	2.969"	2.875"	2.703"	4.125"	3.375"	0.500"	2.750"	0.219"	1.000" - 2.063"	3	3/8 X 1 1/4"	348
Q3	5.000"	0.531"	4.469"	2.875"	2.609"	4.125"	3.375"	0.500"	4.250"	0.219"	1.375" - 2.063"	3	3/8 X 1 1/4"	348
R1	2.875"	0.625"	2.250"	4.000"	3.875"	5.375"	4.625"	0.750"	2.000"	0.250"	1.125" - 2.813"	3	3/8 X 1 3/4"	348
R2	4.875"	0.625"	4.250"	4.000"	3.750"	5.375"	4.625"	0.750"	4.000"	0.250"	1.375" - 2.813"	3	3/8 X 1 3/4"	348
S1	4.375"	0.750"	3.625"	4.625"	4.418"	6.375"	5.375"	0.750"	3.313"	0.313"	1.688" - 3.188"	3	1/2 X 2 1/4"	840
S2	6.750"	0.750"	6.000"	4.625"	4.270"	6.375"	5.375"	0.750"	5.688"	0.313"	1.875" - 3.188"	3	1/2 X 2 1/4"	840
U0	4.938"	0.750"	4.188"	6.000"	5.766"	8.375"	7.000"	1.250"	3.750"	0.438"	2.375" - 4.250"	3	5/8 X 2 3/4"	1680
U1	7.125"	1.063"	6.063"	6.000"	5.649"	8.375"	7.000"	1.250"	5.625"	0.438"	2.375" - 4.250"	3	5/8 X 2 3/4"	1680
U2	10.125"	1.063"	9.063"	6.000"	5.461"	8.375"	7.000"	1.250"	8.625"	0.438"	2.438" - 4.250"	3	5/8 X 2 3/4"	1680
W1	8.250"	1.438"	6.813"	8.500"	8.102"	12.500"	10.000"	1.250"	6.375"	0.438"	3.375" - 6.188"	4	3/4 X 3	3000
W2	11.250"	1.438"	9.813"	8.500"	7.914"	12.500"	10.000"	1.250"	9.375"	0.438"	3.375" - 6.188"	4	3/4 X 3	3000